

Because it's easier!

Airfit

Optimised branch screw connection made of PP

Suitable for a pipe wall thickness of up to 5.5 mm
The safety set is no longer required, hot-water resistant

Tested fire behaviour according to DIN 4101-B2

Kurze Bauform 90 mm

Tested fire behaviour according to DIN 4101-B2

Seal
DIN-EN 681,
EPDM

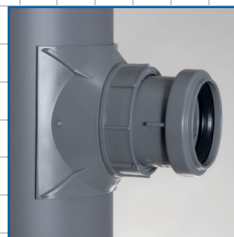
Seal
DIN-EN 681,
EPDM

CE seal according to EN 681



Grip nut with only 3 mm Tapering for optimum Sealing pressure.

- Optimal swage contour
- Seal is held on three sides
- Permanently sealed



SML
Suitable for a pipe wall thickness of up to 5.5 mm

Tested fire behaviour according to DIN 4101-B2

Airfit GmbH & Co. KG • Gewerbegebiet Zingsheim-Süd 40 • 53947 Nettersheim - Germany

Tel.: +49 (0) 2486 80 28 19 • Fax.: +49 (0) 2486 80 27 37 • www.airfit.eu • post@airfit.eu • Ein Unternehmen der Zimmermann-Gruppe

Subject to change. Other products in preparation. Illustrations may differ from the original.

Graphics & photography © Acouleurs.de

Because it's easier!

Airfit

Optimised branch screw connection made

Dimensions - Item no. :

90 / 40 Art. Nr. **29040AZ**

90 / 50 Art. Nr. **29050AZ**

110 / 40 Art. Nr. **21040AZ**

110 / 50 Art. Nr. **21050AZ**

125 / 40 Art. Nr. **22540AZ**

125 / 50 Art. Nr. **22550AZ**

Accessories: Circle cutter Ø 57 mm

HSS bimetallic, complete, for plastic and metal. When working on metal pipes, use lower speed and cutting oil.



Item no. 21057KS

Accessories:

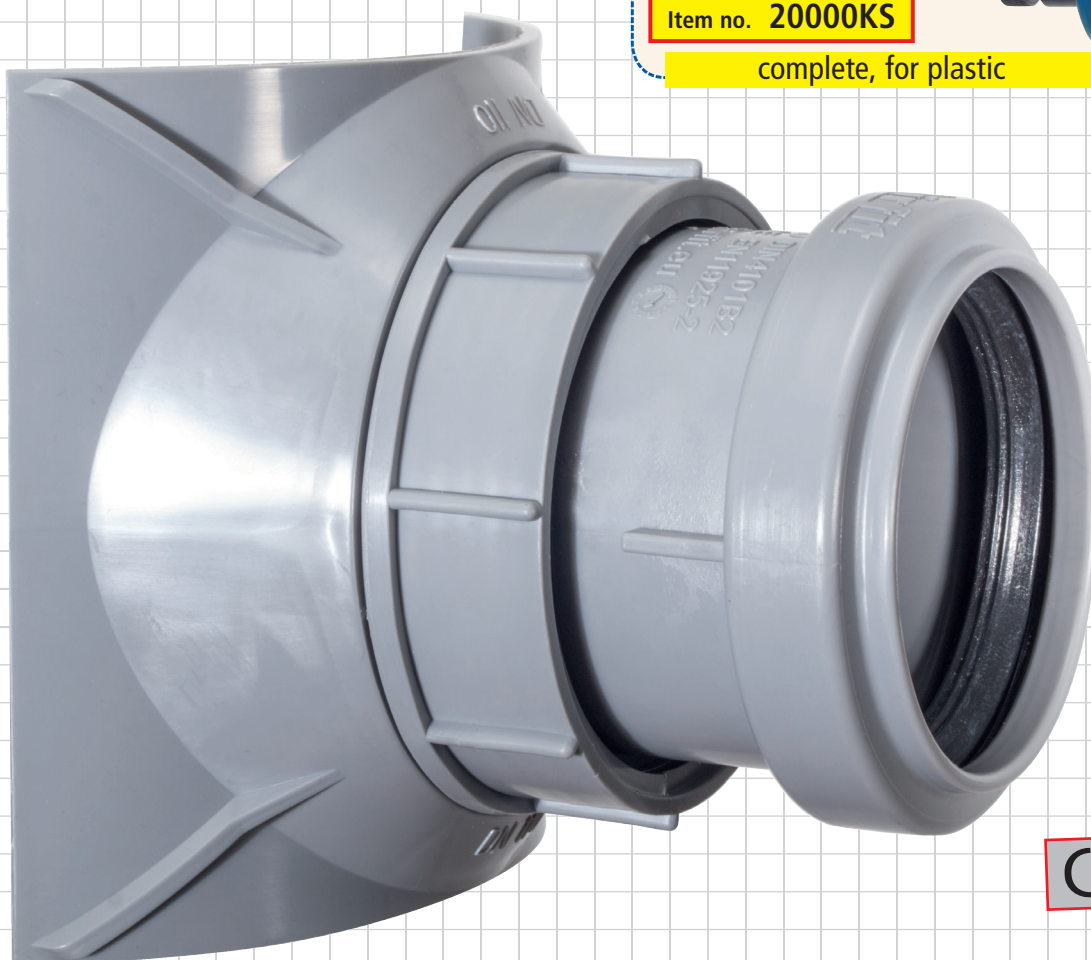
Circle cutter Ø 57 mm complete, for plastic



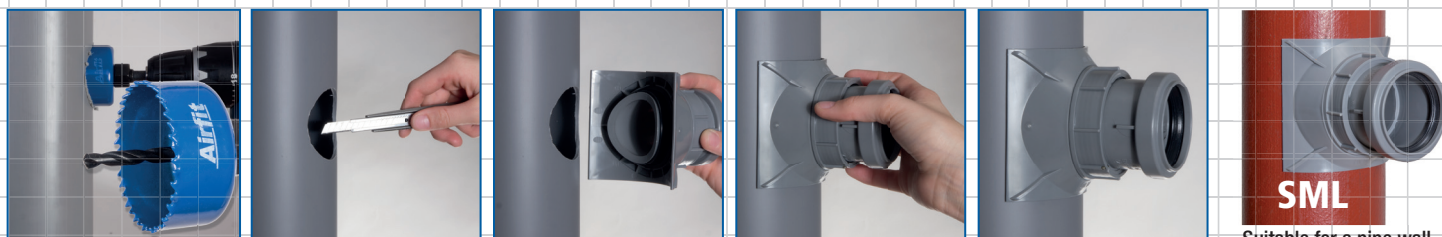
Item no. 20000KS

complete, for plastic

NEW!



CE seal according to EN 681



Simple installation: Drill a hole (perpendicular to the pipe axis) with Ø 57 mm, deburr, fit screw-fit branch and tighten. AND THAT'S IT!

SML
Suitable for a pipe wall thickness of up to 5.5 mm

Subject to change. Other products in preparation. Illustrations may differ from the original.

Graphics & photography © Acouleurs.de