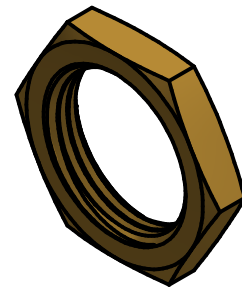
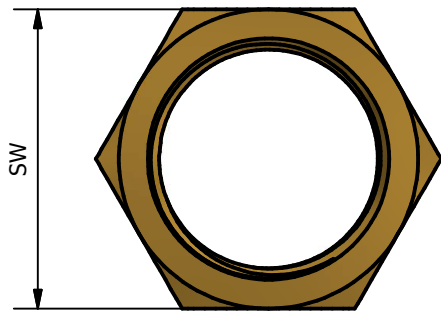
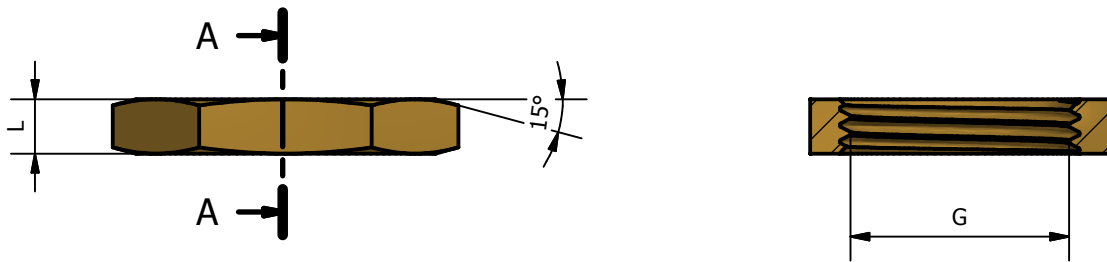


A-A (1.2 : 1)



TDM CODE	SIZE	G	L	SW
120E 14	1/4	1/4	5,5	19
120E 38	3/8	3/8	5,5	23
120E 12	1/2	1/2	6	27
120E 34	3/4	3/4	6	33
120E 01	1"	1"	6	40
120E P4	1"1/4	1"1/4	7	46
120E P2	1"1/2	1"1/2	8	54
120E 02	2"	2"	8	67

WORKING PRESSURE MAX from 1/4 to 1"1/4	16 BAR
WORKING PRESSURE MAX from 1"1/2 to 2"	10 BAR
WORKING TEMPERATURE MAX	120°C

CONFORMITY
1) DM 174 del 6 Aprile 2004
2) UNI EN ISO 9001-2008
3) UNI EN ISO 228

00	Prima emissione	Delaini M.	
Rev.	Nota Revisione	Approvatore	Data Approvazione
Toll Gen:	JS13	Stato sup.:	Giallo Tornito
Filetto:	ISO 228	Note tecniche:	
Peso lavorato:	Peso grezzo:	N° stampo:	
Codice: 120E		Descrizione:	
Materiale: CW 617N EN12165		Disegnatore: Delaini P.	Data: 19/06/2013
TDM Brass s.r.l via Artigiani , 7-9 25030 Maclodio BS Italy tel +39 030 9972217 fax 030 9787089 www.tdmbrass.it email info@tdmbrass.it			

