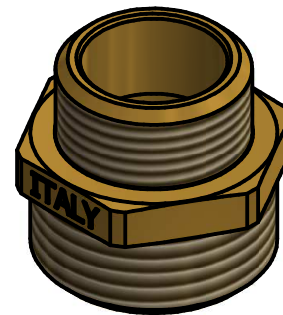
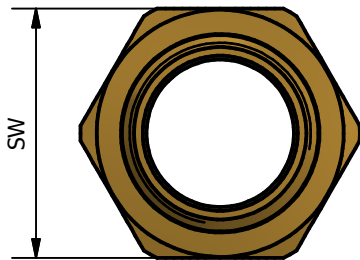
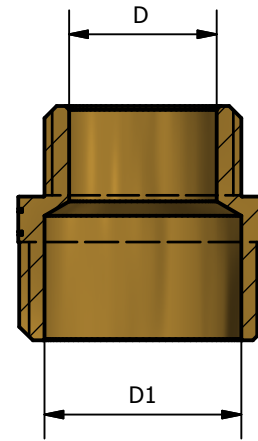
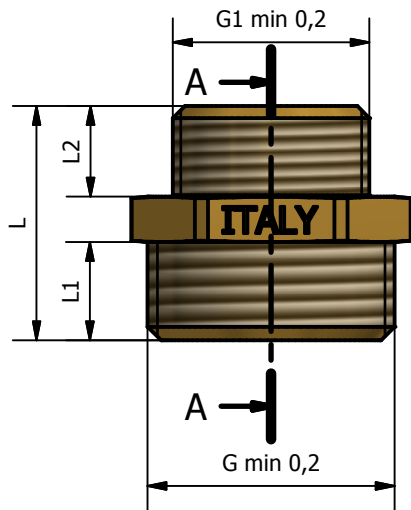


A-A (1:1)



ARTICLE	SIZE	G	G1	L	L1	L2	D	D1	SW
112S 1418	1/4x1/8	1/4	1/8	22	10	8	5	8	14
112S 3814	3/8x1/4	3/8	1/4	25	11	10	8	10	17
112S 1214	1/2x1/4	1/2	1/4	25.5	11	9.5	8	15	21
112S 1238	1/2x3/8	1/2	3/8	26.5	11	10.5	11.5	15.5	21
112S 3438	3/4x3/8	3/4	3/8	28	12	11	11	20	27
112S 3412	3/4x1/2	3/4	1/2	28.5	12	11.5	15	20	27
112S 0112	1"x1/2	1"	1/2	30.5	13	11.5	15	26	33
112S 0134	1"x3/4	1"	3/4	31	13	12	19.5	26	33
112S P412	1"1/4x1/2	1"1/4	1/2	32.7	14	11.7	15	34	42
112S P434	1"1/4x3/4	1"1/4	3/4	33.7	14	12.7	19.5	34	42
112S P401	1"1/4x1"	1"1/4	1"	34	14	14.5	26	34	42
112S P234	1"1/2x3/4	1"1/2	3/4	38.2	15.5	12.7	19.5	39	48
112S P201	1"1/2x1"	1"1/2	1"	38	15.5	14.5	26	39	48
112S P2P4	1"1/2x1"1/4	1"1/2	1"1/4	40	15.5	17.5	34	39	48
112S 0201	2"x1"	2"	1"	42.5	17	14.5	26	51	60
112S 02P4	2"x1"1/4	2"	1"1/4	43	17	17.5	34	51	60
112S 02P2	2"x1"1/2	2"	1"1/2	43	17	17.5	39	51	60

WORKING PRESSURE MAX from 1/8 to 1"1/4	16 BAR
WORKING PRESSURE MAX from 1"1/2 to 2"	10 BAR
WORKING TEMPERATURE MAX	120°C

CONFORMITY	
1)	DM 174 del 6 Aprile 2004
2)	UNI EN ISO 9001-2008
3)	UNI EN ISO 228
4)	UNI EN 1254-4

02		Delaini M.	16/01/2017
Rev.	Nota Revisione	Approvatore	Data Approvazione

Toll Gen: JS13	Stato sup.: Giallo Sabbiato	Codice: 112S Scheda
Filetto: ISO 228	Note tecniche:	
Peso lavorato:	Peso grezzo:	N° stampo:
Descrizione: Brass M/M bushing reduced nipple yellow		
Materiale: CW 617N EN12165	Disegnatore: Delaini P.	Data: 16/01/2017
TDM Brass s.r.l via Artigiani, 7-9 25030 Maclodio BS Italy tel +39 030 9972217 fax 030 9787089 www.tdmbrass.it email info@tdmbrass.it		

